



## **CAUTION! - ELECTRIC TOY**

Not recommended for children under 8 years of age. As with all electric products, precautions should be observed during handling and use to prevent electric shock.

## **Manual**

---

**Starter-Set  
72999**

<b>Table of Contents:</b>	<b>Page</b>
1. Safety Notes	3
2. Connections for the Locomotive Controller and the Track	3
3. Technical Data	3
4. Short Circuit or Overload	4
5. Trouble Running the Train	7
6. Cleaning and Maintenance	7
7. Disposing	7
8. Warranty	7

## Dear Parents,

**! Power packs for toys are not suitable to be used as toys. The use of power packs must always be done under the supervision of adults.**

**Make sure you teach your children to use the power pack only in the manner described in the instructions.**

**Make sure that you teach your children about the dangers of the household current system.**

**Make sure you inspect the condition of the power pack and its connections to the wall outlet for damage at regular intervals (depending on how often the power pack is used to play with the train), at least once a week. This must be done with the power pack unplugged from the wall outlet. If you have the slightest suspicion that there is damage, the power pack may not be used again until it has been checked and repaired by the LGB Repair Department.**

## 1. Safety Notes

Make sure you read the following safety notes before using a LGB power pack for the first time:

- The power pack may only be connected to a wall outlet with voltage that is the same as indicated on the specifications plate on the power pack.
- The power pack is designed for use in a dry area only.
- The power pack is not a toy. It is used to supply current to a model railroad layout.
- Never hold the power pack by its power cord when transporting it.
- Check the condition of the power cord regularly and also check the housing for damage. This visual check may be carried out only when the power pack is unplugged from the wall outlet. If you have the slightest suspicion that there is damage, the power pack may not be used again until it has been checked and repaired by an authorized service organization with the appropriate skills (example: LGB Repair Department). In this situation make sure that you dispose of the power pack in the proper manner or send it to the LGB Repair Department for exchange.
- The permanently attached power cord for the power pack may not be changed in any way.

## 2. Connections for the Locomotive Controller and the Track

### 2.1 Connecting the Locomotive Controller to the Track

Screw the terminal clips to the track. Connect the red wire and the blue wire to the locomotive controller. (See Figures 1-7, Pages 5-6)



#### **Important Note:**

The train controller may only be connected to the power pack included with the set. The use of other power packs or transformers is not authorized!

### 2.2 Connecting the Train Controller to the Power Pack

The locomotive controller needs the switched mode power pack for power. Therefore only the switched mode power pack (1) may be plugged with the cable (5) into the socket of locomotive controller (6) – see illustrations on Page 5, Figure 5 on Page 5.

**Caution!** You must never have two power packs and train controllers connected to the same power circuit (track circuit) at the same time.

### 2.3 Connections for the Power Pack

The power pack may not be plugged into the wall outlet until the wiring for the layout is finished.

## 3. Technical Data

See the specifications plate on the power pack.

## 4. Short Circuit or Overload

### Overload Protection

A built-in overload protection protects the power pack in the event of an overload or a short circuit. The locomotives will come to a stop, solenoid accessories cannot be controlled, and all lamps/lights connected to the layout will go out.

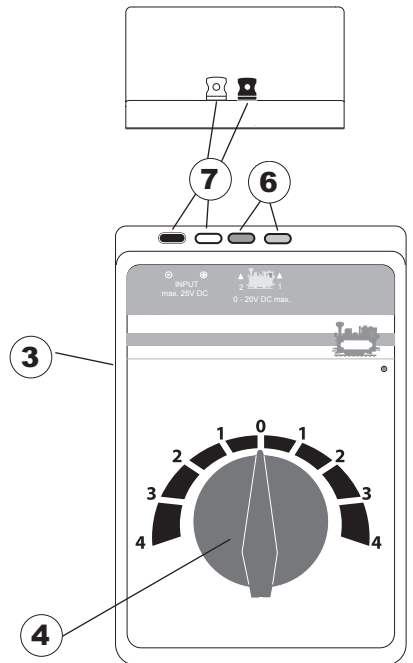
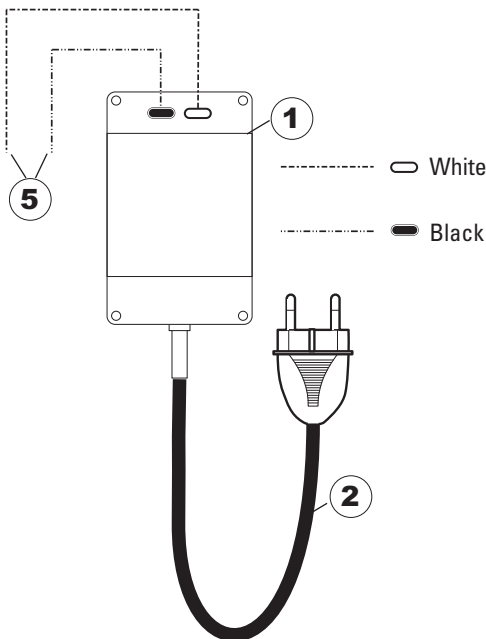
**The following procedure is recommended:**

1. Unplug the power pack from the wall outlet.
2. Look on the layout for the cause of the short circuit and correct it.
3. After about 1 minute the overload protection will go back to regular operation. After this period of time has passed, the power pack can be used again.

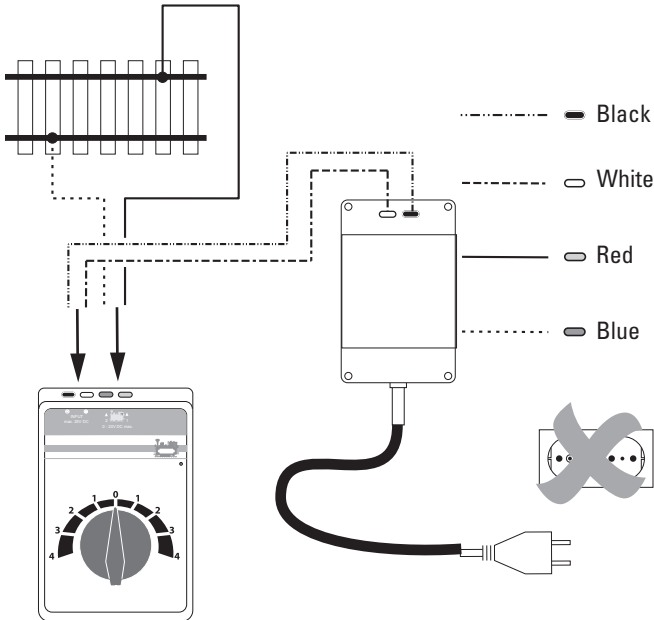
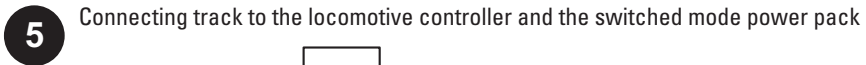
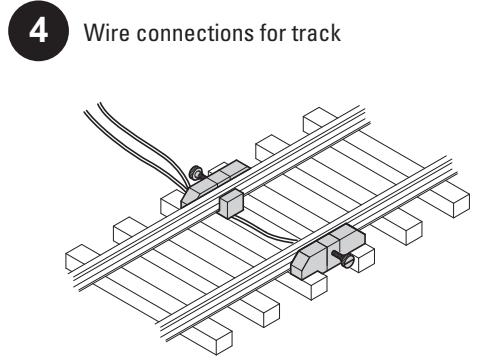
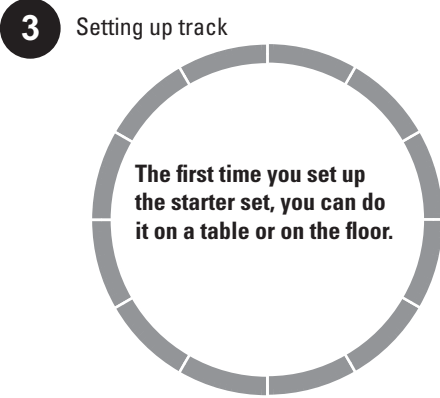
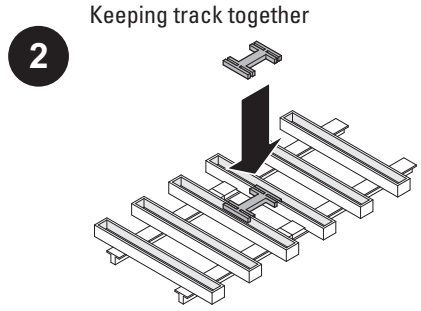
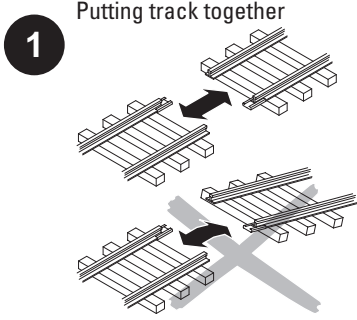
**If the power pack shuts off again without a short circuit being found, then the power pack is overloaded. In this situation the number of users on the layout (locomotives, solenoid accessories, and lamps/lights) must be reduced.**

### Power Pack • Train Controller

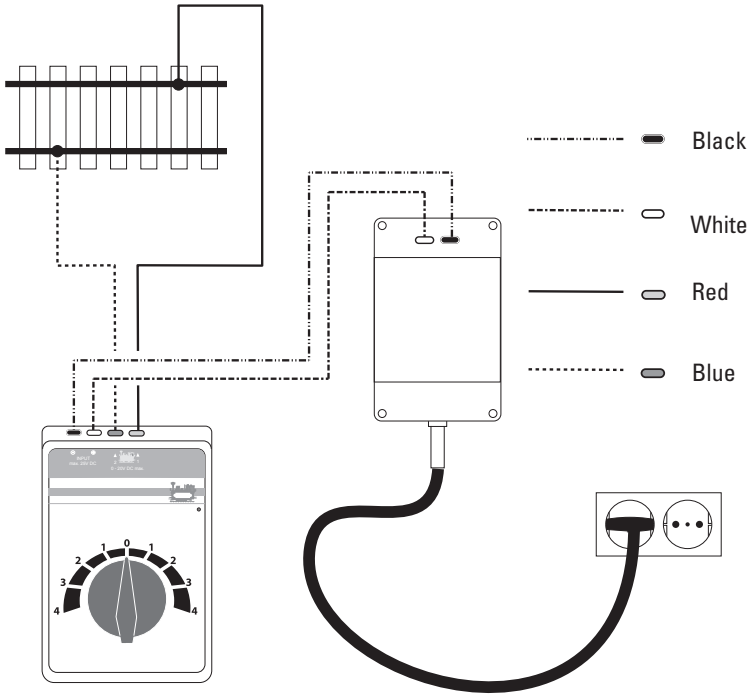
- 1 - Power Pack
- 2 - Connection plug
- 3 - Train controller
- 4 - Speed controller
- 5 - Connections: Control Boxes
- 6 - Connections: Track
- 7 - Connections: Power Pack



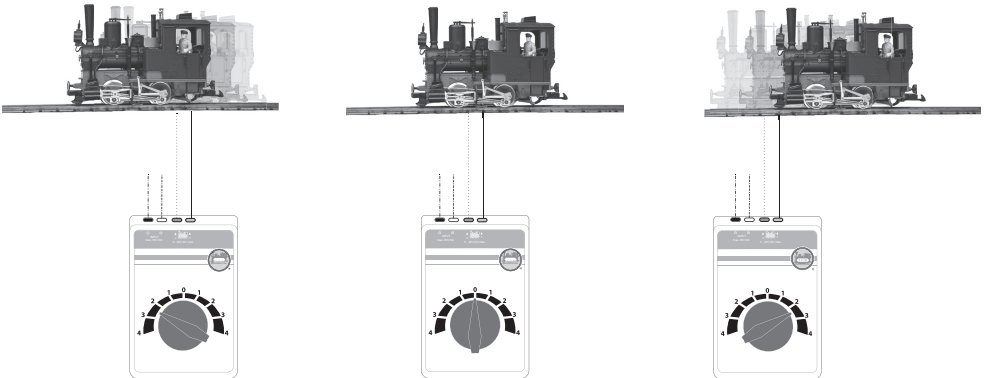
# Setup



## 6 Connecting the switched mode power pack to the wall outlet



## 7 Running the train



## 5. Trouble Running the Train

- If the train does not run, check to make sure that the batteries are correctly installed. If the batteries have been installed correctly, and the train still does not run, check the batteries in the remote controller too. You may need to replace the batteries in the train and/or the remote controller.
- If the locomotive becomes damaged, do not use the locomotive anymore and remove the batteries from it. If car becomes damaged, remove this car from the train and do not use it anymore.

## 6. Cleaning and Maintenance

- Check to see if hair or dirt gets on the axles on the train and remove this hair or dirt from the axles with the help of a pair of tweezers so that the train runs correctly.
- Der Zug kann mit einem trockenen, fusselfreien Tuch oder einem weichen Pinsel gereinigt werden.
- Weitere Wartungsarbeiten finden Sie in der Bedienungsanleitung Ihrer Lokomotive.

## 7. Disposing



Products marked with a trash container with a line through it may not be disposed of at the end of their useful life in the normal household trash. They must be taken to a collection point for the recycling of electrical and electronic devices. There is a symbol on the product, the operating instructions, or the packaging to this effect. The materials in these items can be used again according to this marking. By reusing old devices, materially recycling, or recycling in some other form of old devices such as these you make an important contribution to the protection of our environment. Please ask your city, town, community, or county authorities for the location of the appropriate disposal site.

## 8. Warranty

The warranty card included with this product specifies the warranty conditions.

- Please contact your authorized Märklin dealer for repairs or contact:

Wm. K. Walthers Inc.  
5601 W. Florist Ave.  
Milwaukee, WI 53218

This device complies with Part 15 of the FCC Rules.

Operation is subject to the following two conditions:

- (1) This device may not cause harmful interference, and
- (2) this device must accept any interference received, including interference that may cause undesired operation.

Gebr. Märklin & Cie. GmbH  
Stuttgarter Str. 55 - 57  
73033 Göppingen  
Deutschland  
[www.lgb.de](http://www.lgb.de)



[www.maerklin.com/en/imprint.html](http://www.maerklin.com/en/imprint.html)

190893/0712/Ha2Ef  
Änderungen vorbehalten  
© by Gebr. Märklin & Cie. GmbH